



Acker Marine

Marine Engineering
& Purchase Item

2023.08

COMPANY INTRODUCTION

Marine Engineering

Accommodation
Turn-Key
Furniture
ETC

Purchase Item

Fire Door
Upholstery
Insulation
ETC



Company History

✓ 1807

ACKER Established in Netherlands (Main Company)

Founder: Henricus van den Acker

Creator & producer of interior fabrics

6th generation owners

Export to approx. 35 countries

(Europe North America, Middle East and Asia)

✓ 2007

Royal Status

✓ 2014

Acquired DNV B, D Certification

✓ 2018

Establish joint venture in Korea

(Fabric for Furniture)

Acker Marine Co.,Ltd in Busan

✓ 2019

Partnership with Kingslide in Taiwan (Furniture Hardware)

Partnership with Koskisen in Finland (Plywood)

Partnership with Rancan in Italy (Wooden Block)

Partnership with Alfatex in Italy (Leather)

Partnership with Baggerod (Door)

Partnership with Isover (Insulation)

✓ 2021

Establish 2ND Office in Yangsan



Business Overview

VARIOUS SHIP MATERIAL

We handle tasks ranging from supplying interior finishing materials, furniture, insulation, and doors for domestic and international ships, to design and construction.

► Engineering

► Upholstery & Carpet

► Wooden Block

► Sanitary Item

► Gymnasium

► Marine Door

► Insulation

► Plywood

► Fur. hardware

► WorkShop



H/J CLASS : H-120H
Sound reduction : RW=54dB



A CLASS : HB-5000
Sound reduction : RW=44dB



B CLASS : G007
Sound reduction : RW=37dB



A CLASS : SD104
Sound reduction : RW=40dB

(*Electric Sliding Door)



Various Marine Door

[Baggerod]

Marine Door

The most advanced door system
for all purposes.



Marine Fire Door

- : External Door
- : Internal Door
- : Sliding Door

ETC Item

- : Fire Window
- : Escape Hatch



[Pocadel]

Marine Door

Light Weight fire rated
glazed doors & walls



GLAZED HINGED DOORS
GLAZED SLIDING DOORS
GLAZED WALLS
GLAZED PARTITIONS
GLAZED BULKHEADS
GLAZED WINDOWS
CUSTOMIZING



[Alfatex | Elmo | Chamatex | ARMO] Uphol.& Carpet

High Performance Sustainable
Finish Material



Leather

- : Artificial Leather (Alfatex)
- : Genuine Leather (Elmo)

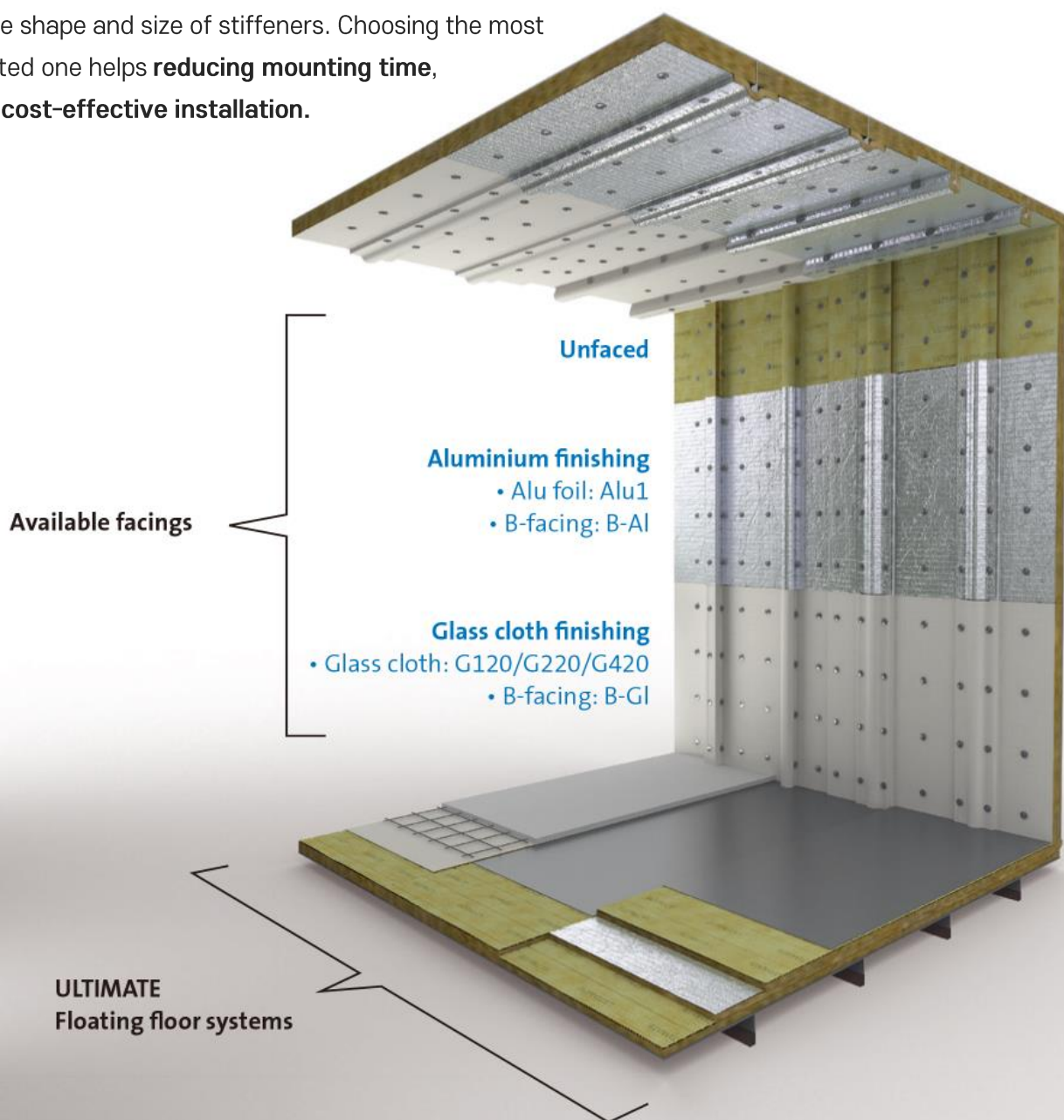
Fabric

- : For Curtain and Furniture (Acker)

Carpet

- : ARMO

Thanks to its **unique flexibility**,
ULTIMATE perfectly adapts to all geometries.
Different installation methods can be used depending
on the shape and size of stiffeners. Choosing the most
adapted one helps **reducing mounting time**,
for a **cost-effective installation**.



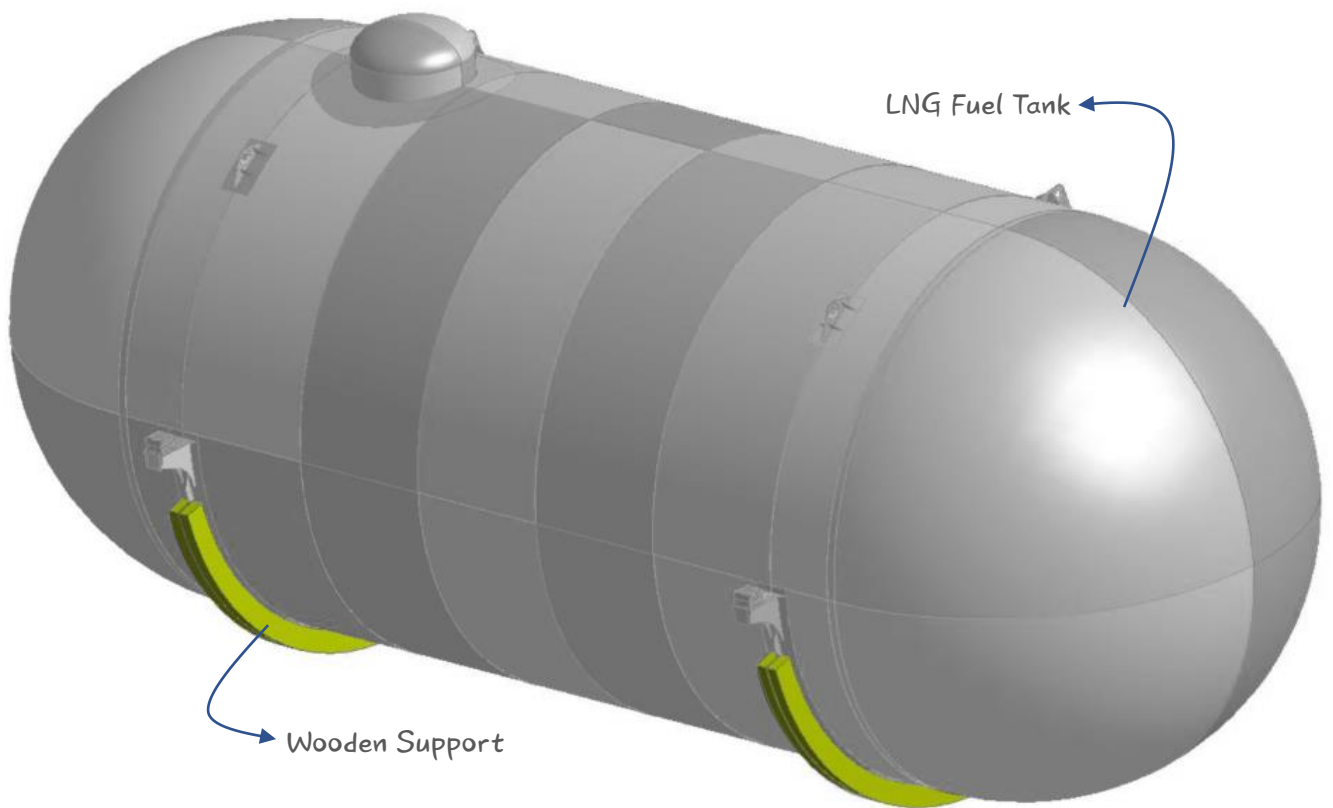
[Isover]

Insulation

Isover offers lightweight insulation solutions to be used in a wide variety of constructions and applications.

Applications

- : Fire protection of steel, AL and FRP structures
- : Sound protection
- : Thermal comfort
- : High temperature
- : Piping
- : Heating, Ventilation and Air Conditioning ducts (HVAC)



[Rancan]

Wooden Block

Wooden Support for LNG Fuel Tank and Hi-tech Laminated Wood For all industrial applications



Wooden Block Product

- : Hi-tech Laminated Densified Wood
- : Rounded rods, Threaded rods and Nuts
- : Shield & end Rings
- : Traction Transformers
- : Cryogenic Insulation



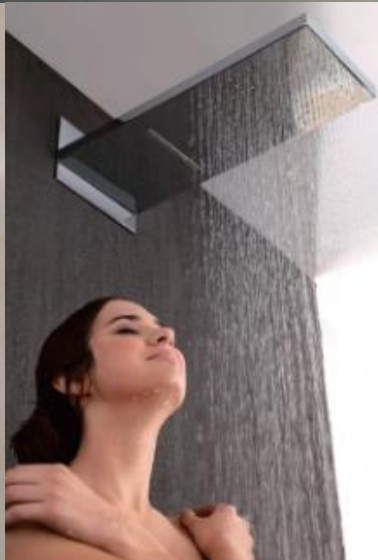
[Koskisen]

Plywood

Globally Known for their tailored solutions,
high quality and customer orientation

Plywood Product

- : For all types of construction
- : Light and heavy transport vehicles
- : Packaging industry
- : Die cutting
- : Interior design and Furnishings
- : Joinery industry



[Acker]

Sanitary item

Public Toilet System

Barrier-free Toilet System

Cabin Toilet System

Faucet | Shower Head & Mixer | Drain |

Wash basin Bowl | Bathroom Accessories



King slide



KERONG

[King Slide / KERONG]

Fur. Hardware

Various Furniture Hardware for
Perfect Fitting.

Furniture Rail – King slide

- : Rail Kit for Metal Furniture
- : Rail Kit for Wooden Furniture

Furniture Lock – KERONG

- : Electronic Locks
- : Smart Locks

GYMNASIUM

TREADMILL
ELLIPTICAL
ROWER
BIKE
BENCH
MULTI GYM



[LANDICE]

Gymnasium

Landice has built a success by building the world's most durable, technologically advanced and uncompromisingly easy-to-use .

HEALTH CLUB PRODUCTS

- : Treadmills
- : Bikes
- : Ellipticals

REHABILITATION PRODUCTS

- : Treadmills
- : Bikes
- : Ellipticals



[BOSCH]

Workshop

Speed up your path to efficient
industry 4.0 solutions with CISS

Benefit

- : retrofittable multiple sensor solution
- : Increased efficiency
- : less downtimes
- : high protection class
- : broad temperature range



Acker Marine

SITE www.ackermarine.co.kr
FAX +82 (0)504 131 7955
TEL +82 (0)70-4438-9187
MAIL business@ackermarine.co.kr